

Sistem Pendukung Keputusan

M. Ali Fauzi

Decision Support System

M. Ali Fauzi

WHY DSS?

Why DSS?

The analytical **tools** are **better now** and so the kinds of business intelligence that we need are possible in a way it was not before

Why DSS?

Increasing numbers of upper level **managers** becoming more **comfortable using computers and technology** in general for a variety of tasks

Why DSS?

The use of ERP, POS, and data warehouses has made **data** about suppliers, processes, and customers **more available** than ever before.

Why DSS?

These **databases** are more flexible in their design so that their data are **more easily combined** with data from other databases

Why DSS?

These **databases** are more flexible in their design so that their data are **more easily combined** with data from other databases

Why DSS?

The **data** come **faster** than
ever before

Why DSS?

Market conditions continue to **change** as well, and managers need to be able to respond to those changes quickly.

Why DSS?

Market conditions continue to **change** as well, and managers need to be able to respond to those changes quickly.

Why DSS?

Regulations have **changed** too

Why DSS?

Increasingly managers want **fact-based** decisions

Why DSS?

Competition, locally even globally

Why DSS?

The availability of these rich databases and analytical tools not only **saves time** but also increases the quality of analyses considered

Tanpa
masukan

BNI

5264 2313 8000 2974

5264
MEMBER
SINCE 12
VALID
UNTIL 07



ERMAWATI PERHETIYO

www.bni.com

Garuda Indonesia

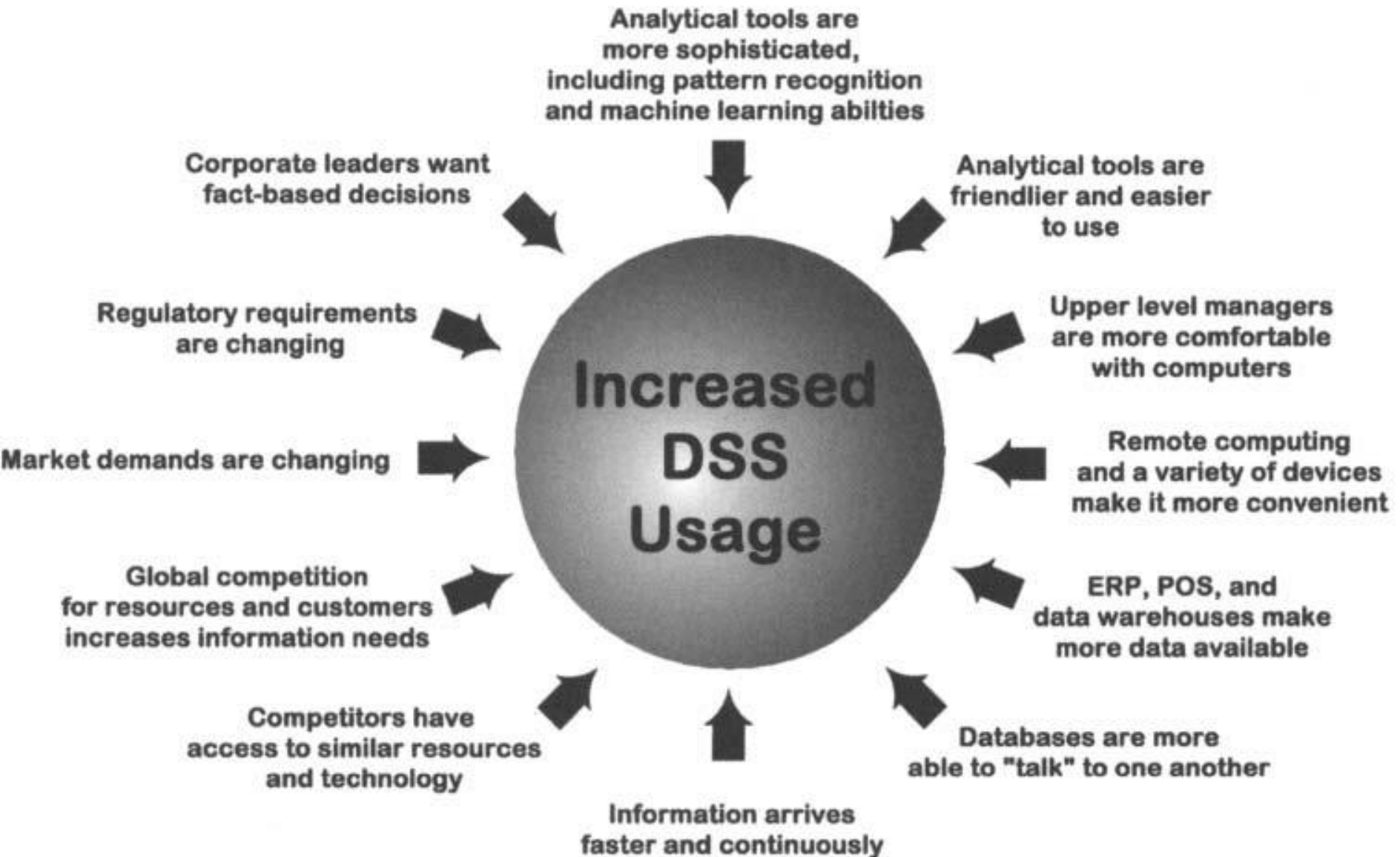


MOH RIDWAN NONT
106 290 682

GFF BLUE

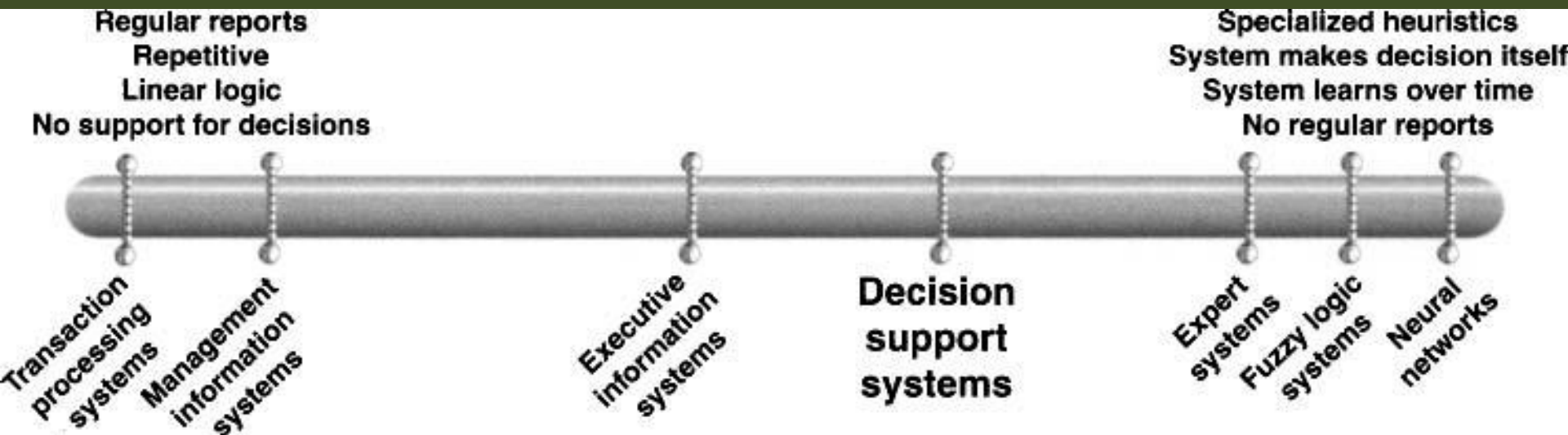


MEMBER SINCE
02/2013

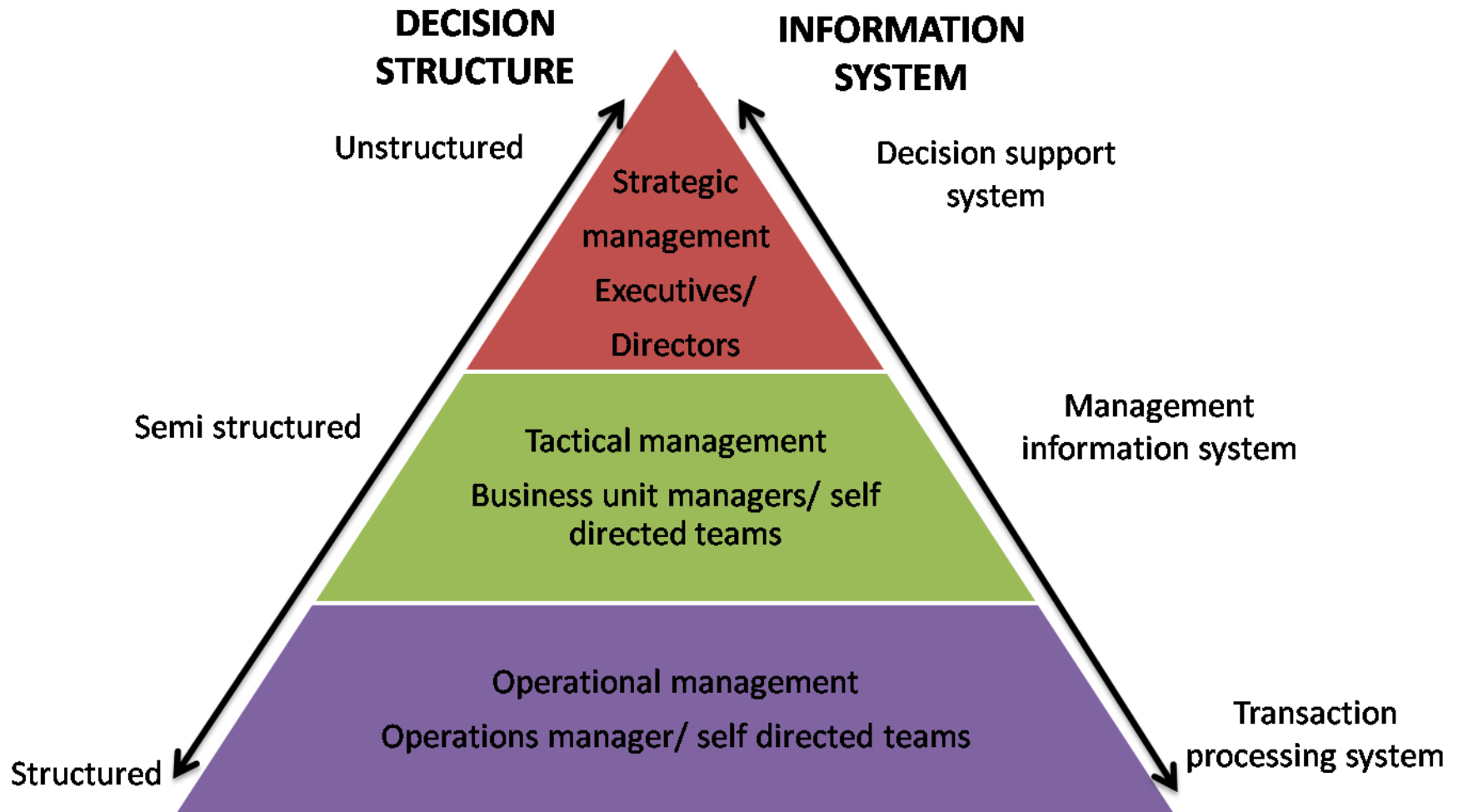


TPS, MIS, DSS, EIS

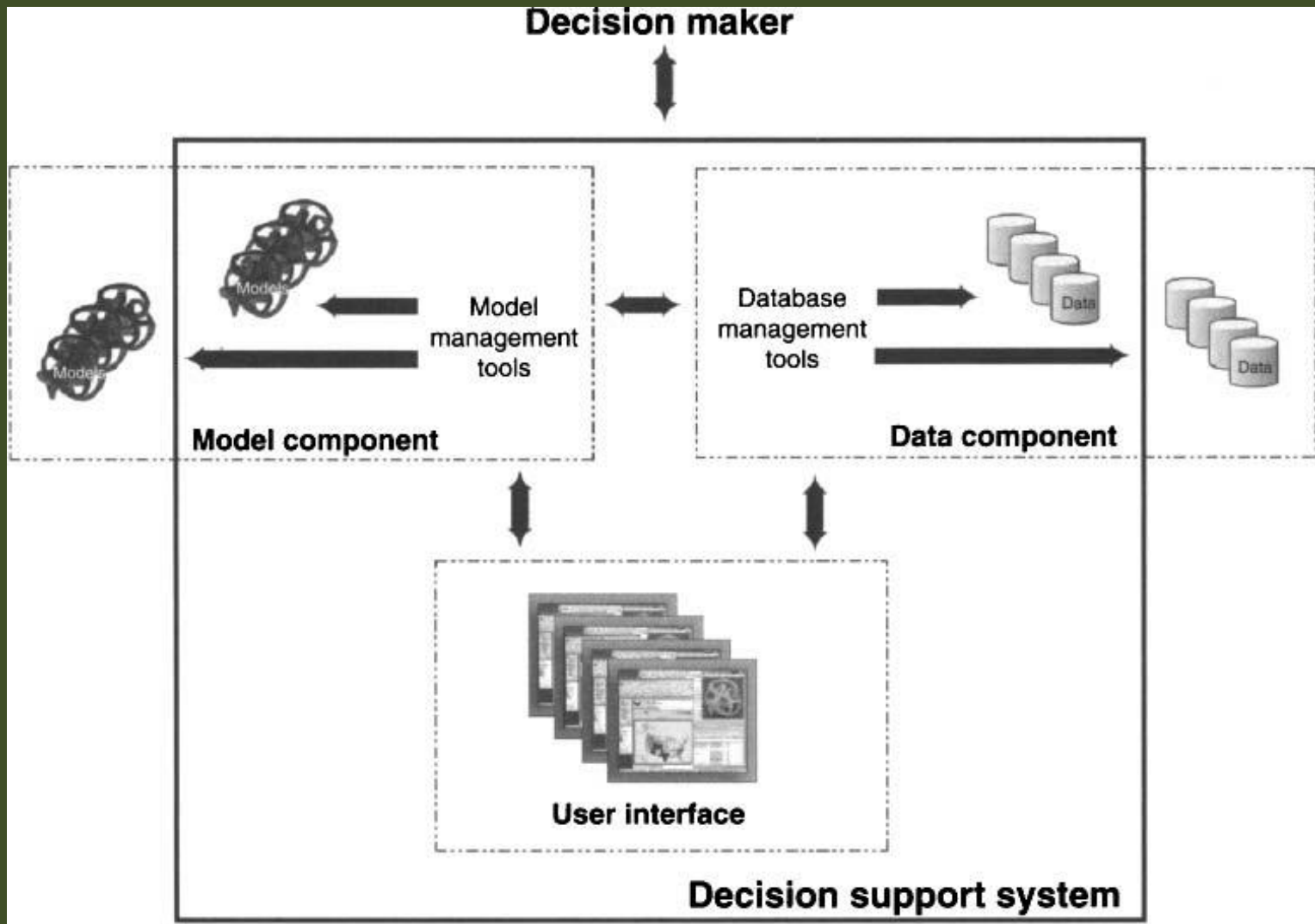
TPS, MIS, DSS, EIS



TPS, MIS, DSS, EIS



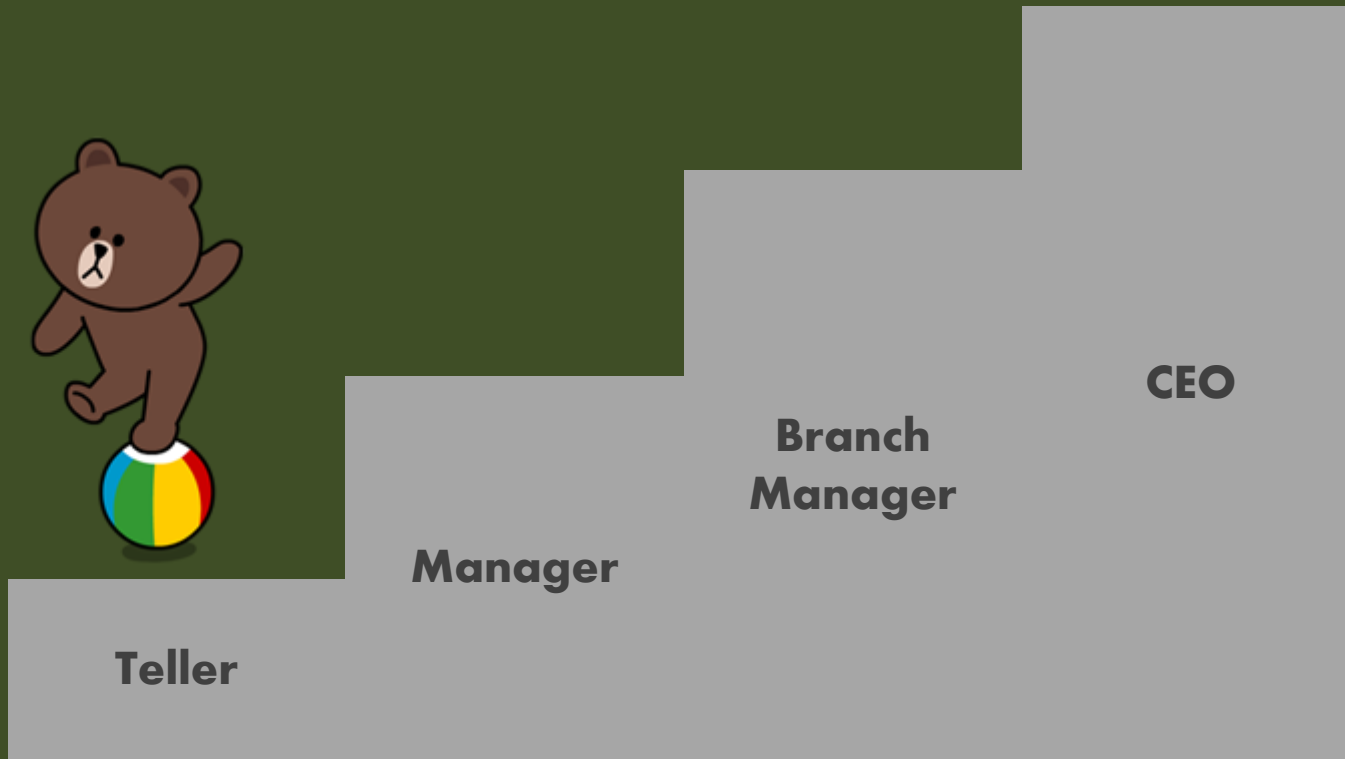
TPS, MIS, DSS, EIS



TPS, MIS, DSS, EIS



TPS, MIS, DSS, EIS



TPS, MIS, DSS, EIS

Simply Touch for TakeAway

General | Order | Reports | Tools | Logout: Alain Sassine

Sides	Crumbed Prawn	Calamari	Crumbed Scallop	Salt Pepper Squid	Seafood Stick
Coffee-Tea	Battered Mussels	Fish Cake	Fish Bite	Garlic Bread	Mushy Peas
Drinks	Gravy	Chiko Roll	Spring Roll	Cornjack	Crumbed Sausage
	Cheese Sausage	Potato Cake	Chicken Wing	Chicken Nugget	Dim Sim
	Pineapple Fritter	Banana Fritter	Greek Salad	Caesar Salad	Garden Salad
	Coleslaw Large	Coleslaw Small			

Cash Sale Clear Sale

Description	Qty	Total
Hawaiian Pack	1	\$10.45
Spring Roll	1	\$2.60
Calamari	2	\$9.20

Edit

Recent Orders

Order ID	Total	Received	Change Due
10312	\$10.50	\$20.00	\$9.50
10311	\$36.20	\$50.00	\$13.80
10310	\$8.30	\$10.00	\$1.70
10307	\$2,204.00	\$2,204.00	\$0.00
10305	\$4,251.00	\$8,502.00	\$0.00

7	8	9
4	5	6
1	2	3
	0	.

Discount	\$0.00
Total	\$22.25
Amount	\$0.00
Change	-\$22.25

TPS, MIS, DSS, EIS



Teller

Manager

**Branch
Manager**

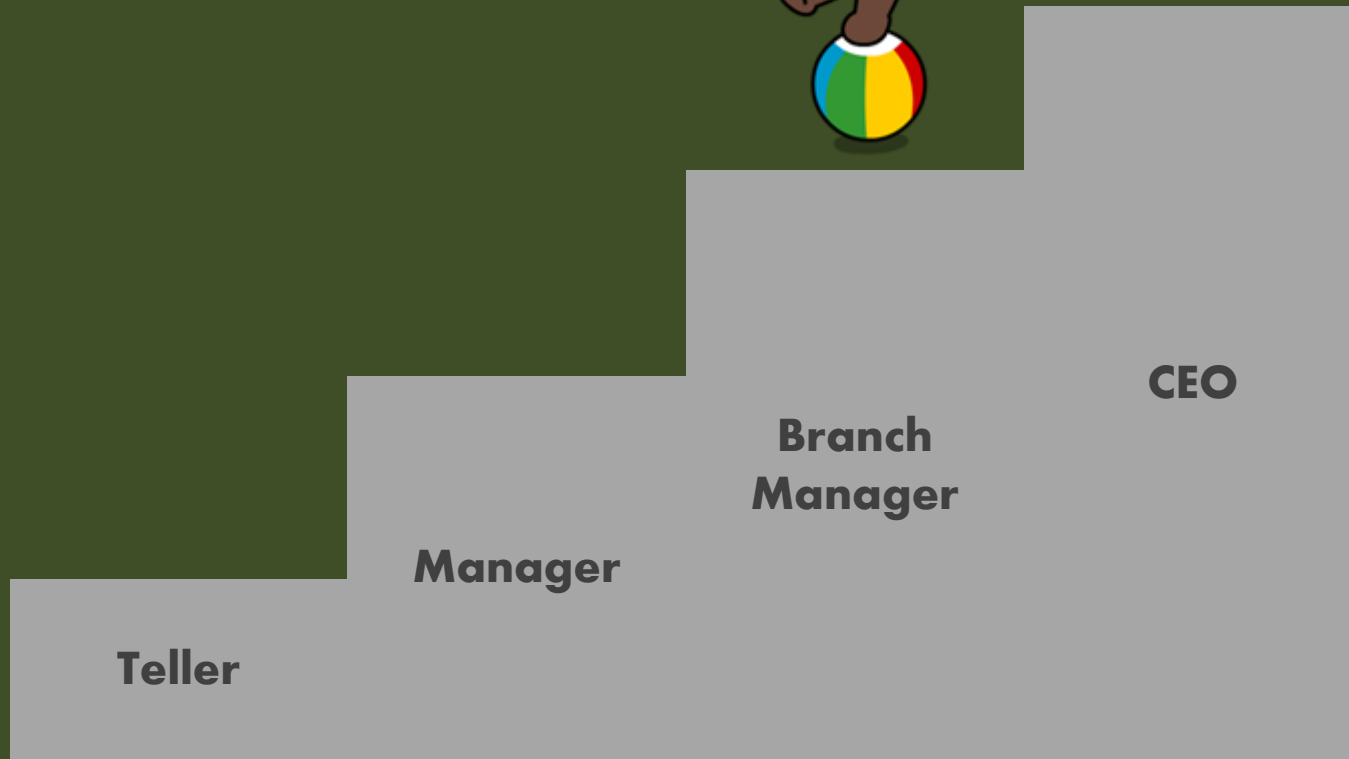
CEO

TPS, MIS, DSS, EIS

Pay Bills									
Vendors 6		Pay Now 5		Cutoff Date 8/13/00		All Materials			
Total Owed \$5,949.24		Amount \$5,949.24							
Pay	Vendor	Pending	Current	Past Due	Adjust	Total Due	Due Date	Pay Now	Items
✓	Cayuga Mirror & G...	\$0.00	\$0.00	\$1,836.00	\$36.72	\$1,872.72	7/18/00	\$1,872.72	3
✓	Cayuga Lumber	\$1,000.84	\$909.36	\$2,210.34	\$148.10	\$3,267.80	12/26/99	\$3,267.80	9
✓	Agway	\$0.00	\$132.84	\$135.00	\$21.60	\$289.44	12/26/99	\$289.44	3
✓	Bishops of Ithaca	\$1,102.38	\$155.38	\$0.00	\$0.00	\$155.38	8/21/00	\$155.38	5
	Weeks Welding	\$606.96	\$0.00	\$0.00	\$0.00	\$0.00	10/26/00	\$0.00	3
✓	Seneca Supply	\$16.50	\$0.00	\$271.57	\$92.33	\$363.90	3/26/99	\$363.90	2

Create Checks **Print Report** **Save as Text** *Double-click on a row to see details* **Close**

TPS, MIS, DSS, EIS



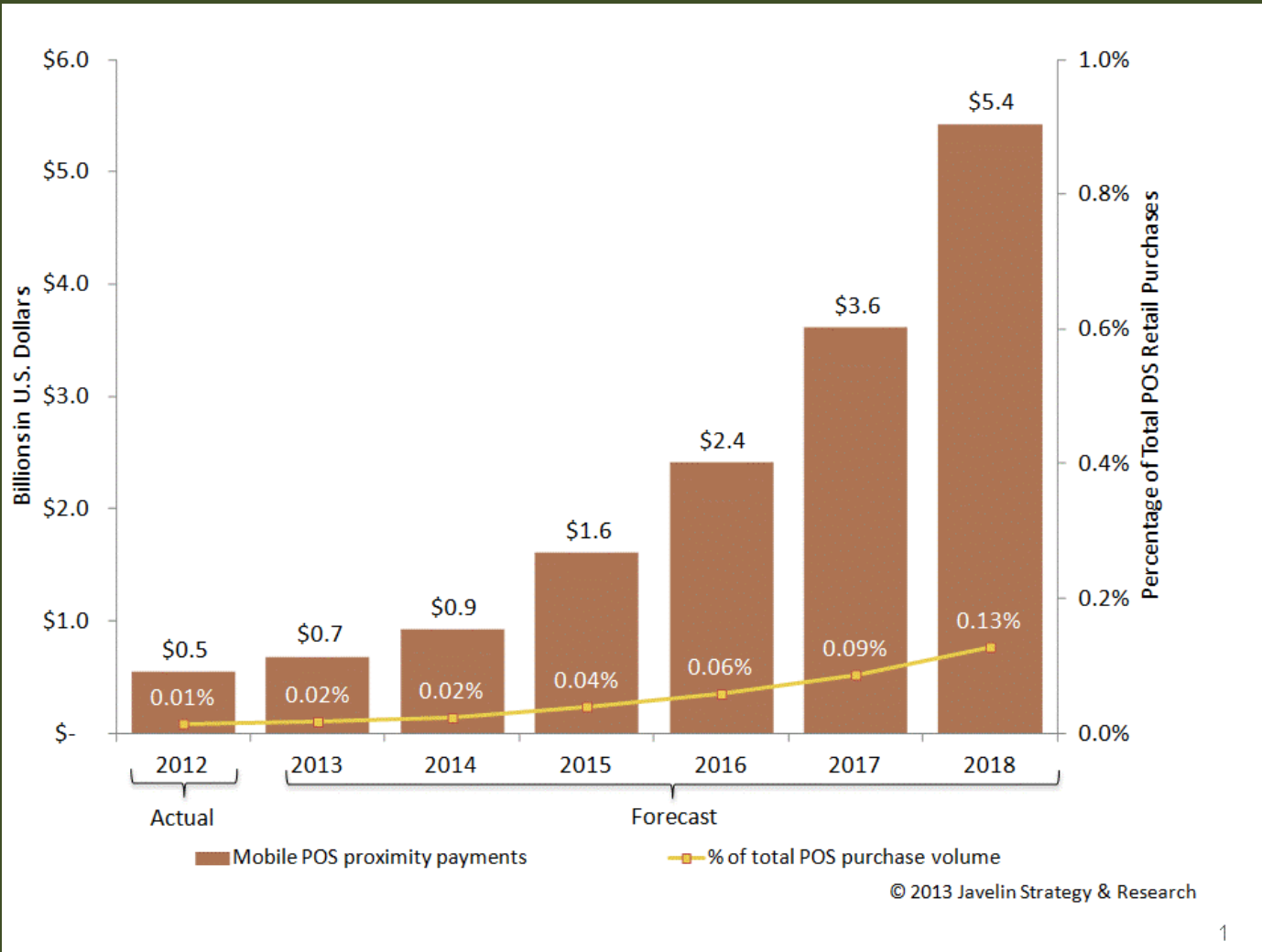
Teller

Manager

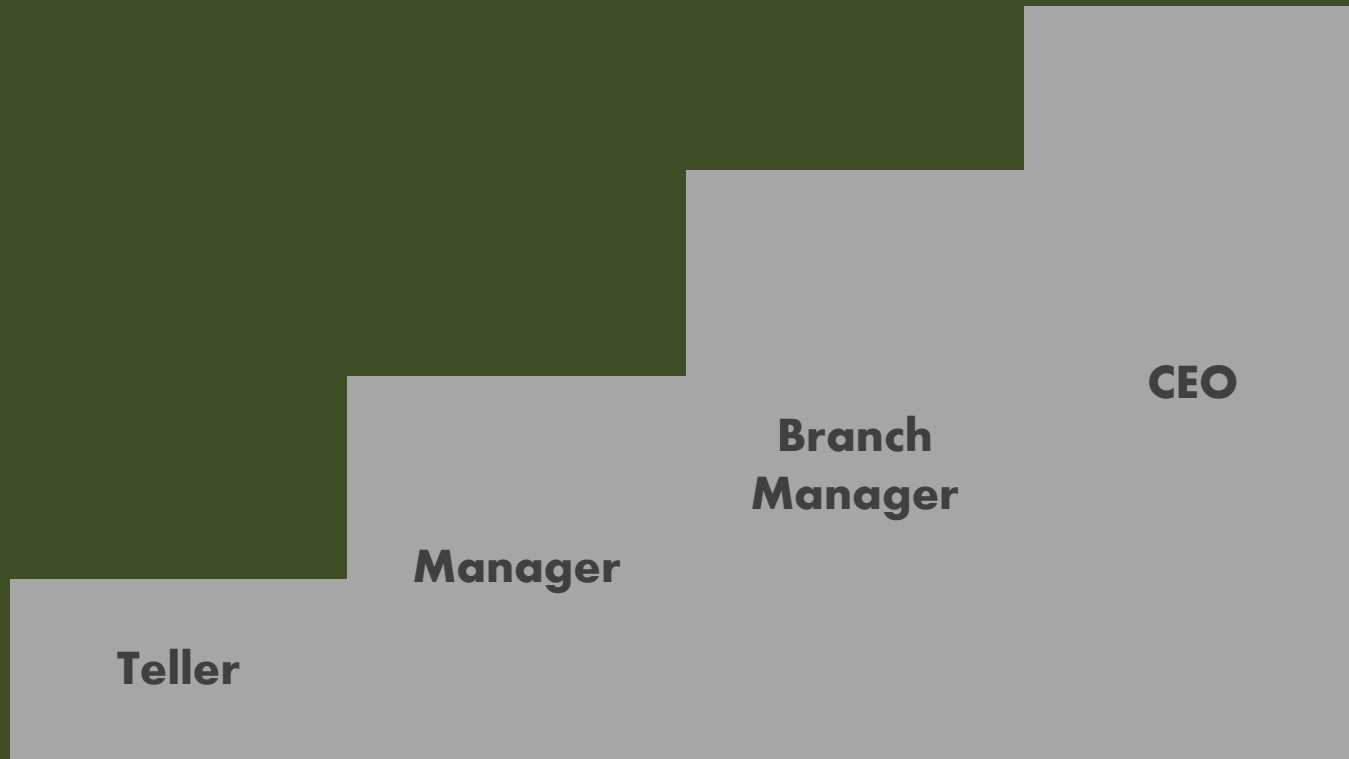
**Branch
Manager**

CEO

TPS, MIS, DSS, EIS



TPS, MIS, DSS, EIS



TPS, MIS, DSS, EIS





**LETS PLAY A
GAME...**

THE GAME



100 ml

Rp 8.200



100 ml

Rp 6.800



100 ml

Rp 8.600

ASUMSI

- > **Modal : Rp 1.000.000,-**
- > **Calon pembeli : teman sekelas**
- > **Harga Jual :**
 - Sunsilk : Rp 8.000,-**
 - Dove : Rp 10.000,-**
 - Clear men : Rp 9.000,-**
- > **Maksimumkan Keuntungan!**